



# NEWSTEAD COLLEGE NEWSLETTER

ISSUE 5 September 2016

[newstead.college@education.tas.gov.au](mailto:newstead.college@education.tas.gov.au)

[www.education.tas.edu.au/newsteadcollege](http://www.education.tas.edu.au/newsteadcollege)

[www.facebook.com/NewsteadCollege](http://www.facebook.com/NewsteadCollege)

**KEY DATES**

**Term 3 Ends**

Friday 23rd September

**Term 4 Begins**

Monday 10th October

**Term 4 Ends**

Friday 11th November

**TCE Examination Week 1**

Monday 14th November

**TCE Examination Week 2**

Monday 21st November



# THE PRINCIPAL

What a term we have had in regards to achievement. Students at Newstead College continue to shine in all aspects of college life. Academic, sporting, production, music, drama,— we have produced some amazing results. This newsletter will highlight the achievements of our wonderful students.

I wish to acknowledge the support and dedication of the staff at Newstead who spend countless hours working with students not only on site, but after hours including numerous weekends. Their commitment to ensuring our students have the best opportunities to succeed is unwavering. Thank you.

Term 4 is only five weeks duration and for those students who will be studying for exams please make sure that you access tutorial support and advice on time management and study skills. Your support group teacher will assist you in your lead in to the exam period. If parents wish to contact your son or daughter's support group teacher or class teacher for advice in regards to exam preparation, do not hesitate to do so.

I wish all students a safe and happy holiday and we look forward to a very quick but productive term 4.

Deaine Coyle  
Principal

## FINAL CURTAIN

## ROCK MUSIC SUMMER SCHOOL

Congratulations to all students and staff who have made outstanding contributions over the past 25 years to the Alanvale and Newstead College's Rock Music Summer Schools. This programme has served hundreds of young rock stars from across the state. Through this experience, Tasmanians had the opportunity to be inspired by some of the most skilled Australian artists. We would like to announce this program has concluded and the Performing Arts Department at Newstead College will focus on developing more exciting and innovative transition experiences for our 18 associated high schools. More detail later...

**Newstead College offers our genuine thanks and kindest regards to all who have been involved over the last quarter of a century!**



# Disney THE LITTLE MERMAID

The Launceston Musical Society's public performances of Disney The Little Mermaid were performed at the Princess Theatre during August to full houses!

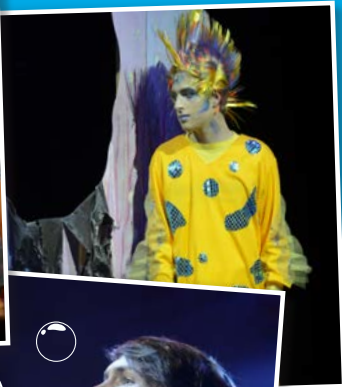
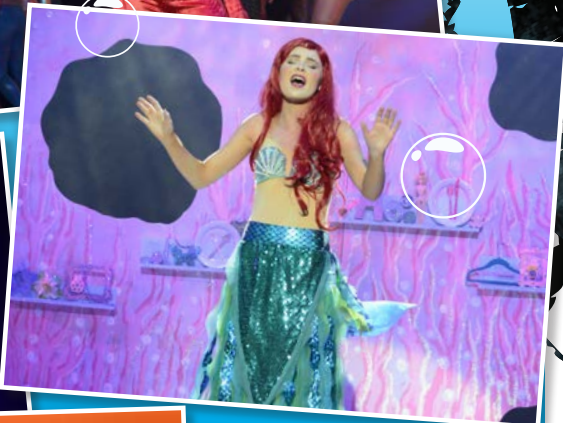
Over 4800 young people, parents, grandparents and students from Newstead College got to experience the magical undersea musical.

The production was an enormous success for students of the College and its relationship with the musical theatre companies continues to flourish, with many staff and community members proudly proclaiming that The Little Mermaid was the best production that this College has been a part of.

On behalf of our talented cast, skilful band and committed technical crew....Thank you to all those patrons who came to support and encourage us during the rehearsal process and your attendance at the performances.

As a company, the Launceston Musical Society, in association with Newstead College, greatly appreciated the opportunity and experience!

Words by Chris Cabalzar



# BEACON

# HIP

## HIGH INTENSITY PROGRAM

Newstead College in conjunction with our Beacon partners, conducted a *High Intensity Program* at the College. Students from our VET Retail class were involved in the group program where mentors from the community supported our students in preparing them for the world of work. The College wishes to thank all of the mentors who willingly gave up time to engage and inspire the next generation.



# BEACON

## LOCAL SCREENWRITER Visits Newstead

'Watch the moths, follow the light,' Vicki Madden creator and writer of the blockbuster new mini-series *The Kettering Incident* visited Newstead College during July. Madden gave advice to English writing and Media Studies students who wanted ideas to create stories for their written and visual projects. Madden believes the best stories come from within your own personal life and experiences. Madden, born and raised in Launceston, spoke about her career, her viewing interests which include supernatural crime and Scandi-Noir dramas. These texts and genres inspired her to create *The Kettering Incident*, which was filmed almost entirely on location in Tasmania and currently airing on Showcase.

It was an engaging and rewarding experience for myself and our class to hear about a local Tasmanian making it big internationally.

Words By Eben Holloway Media 3





# THE BRAZILIANS' STUDENTS EXPERIENCE

The Brazilians' group arrived here in Tasmania on February 16th. We started to attend school on February 18th, and we had the opportunity to know a part of the Australian culture, try sausage rolls, a lot of vegetables, after that fish and chips and also the difference between the structure & educational system. We are pleased and thankful for the teachers' support, they were patient, careful, and they made us more confident, specially our EAL teacher Emma Maletta who helped us to improve our English so much. At Newstead College, the Brazilians could appreciate the diversity, show and learn about new cultures on the International Day, we also explored new places around Tasmania such as Bridport (where the weather did not bother us), Holly bank treetops, Hobart, Wineglass Bay, Aurora Stadium, etc. We will never forget this amazing experience, all the people who looked after us such as Mike, Linda, our host families who contributed for us to feel home, given their love and time and also the friends we've made, we will remember this for the rest of our lives. Obrigado – Thank you, mates! See ya!



Words By - Guilherme Coelho, Kleyton Renato, Luene Paz, Maria Duarte & Paulo Vinicius Costa.

## AFTER YEAR 12? FUTURE PLANNING - WHAT'S NEXT?



**University | TAFE | Apprenticeship | Work | Gap year | Other**

Figuring out the next step after College is straight forward for some but can be difficult for others. To help you, The Careers' Team, in Elphin Block is continuing a careers focus in different "subject areas" for students to help guide you, in your decision making. We have also had visitors come to Newstead to tell students about apprenticeships, University pathways, ADF and more. If you missed these sessions and need information come and see us in the Careers room.

**TAFE open-days are happening now, University enrolments are open (with scholarship and 'ontime' applications closing mid to late September).**

Students who would like more guidance or assistance should visit the Careers room in Elphin block during lunch time.



Parents who would like to come along too are welcome to ring the office on 63323232 to organise a parent/student appointment with one of our Careers staff.

# COPSCORNER



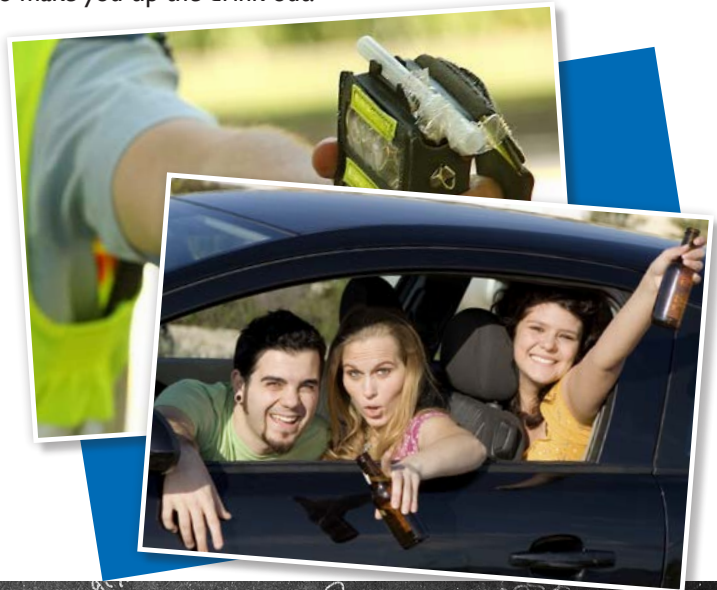
Welcome to Cops Corner. In this addition we are going to explore the law relating to the possession and drinking of alcohol, and young people.

Contrary to popular opinion, Cops aren't out there to ruin everyone's fun on a Friday or Saturday night. We just want to make sure that everyone has a safe and happy time. That is why we have laws concerning the possession and drinking of alcohol in a public place. A public place is any street, or area which is open to the general public; Cypress St for an example. Other public places include the Mall, City Park and even Kmart. Many people don't know that your car is included under the definition of a public place when you are driving it, or it is parked on the street. Certain laws tell us what we can and can't do, and the possession of alcohol is controlled under the law.

As we head towards the end of the year many of the students at Newstead are turning 18, or have turned 18. This means that you can legally hit the nightclubs and pubs and drink alcohol. Turning 18 also means that you can possess alcohol in a public place. BUT the bottle, can or wine cask must be un-opened. And No! You can't take a sip out of it and screw the lid back on the bottle. Once you open the bottle, can, cask of wine or you are carrying a container with alcohol in it, you are breaking the law. If the Cop's catch you may be fined \$157 and receive a conviction. If you are caught drinking in a public place, then you can be fined another \$157. That's an expensive drink! PS: we also make you tip the drink out.

If you are under the age of 18 the law says you are not allowed to possess or consume alcohol in a public place. (In a private home is a topic for another day.) If the police catch you, then we have to tell Mum or Dad and you might have to come down to the station with your parents and have a chat with Justine or myself (what a pain for you!) You will be charged under the Youth Justice Act. Oh! We will also confiscate your favourite drink or get you to tip it out. If you are under 18 and you are caught drinking in a nightclub or pub (or found there) then you will be charged. Also the manager of the pub or club can face HUGE fines, or have their liquor license suspended or cancelled. Wow! Who would have thought having a drink could be so complicated?

Words By  
Constable Deon Johns



## MATHS COMPETITION

Newstead College Maths Specialised students (Ivan Gallagher, Ben Howard and Floyd Imber) with the support of their teacher, Charlie Jeong, participated in the 2016 Annual Maths Relay Competitions at Scotch Oakburn College on Sunday 21 August. Our students were proudly awarded second prize (with a great score!) in senior secondary division in Northern Tasmania and third in the state.



# SATURDAY NETBALL PREMIERS 2016

Our Newstead Black team of Chelsea Nixon, Elsie Watts, Adele Chugg, Paige Harvey, Kate Dakin, Taylor Marshall and Lara Howard (Grand Final MVP) have gone through the season undefeated and won the 2016 premiership. A fantastic team performance saw NC Black defeat LCS 22-8.

The girls started nervously in the Grand Final but settled in the second quarter racing away to a 7 goal advantage at half time. Playing at goal attack, Lara Howard shot 7 of the team's 9 goals to the main break and was clearly the best player on court. Adele Chugg (WD), Paige Harvey (C, WA) and Kate Dakin (WA, C) were controlling the centre of the court, while Chelsea Nixon (GK) and Elsie Watts (GD) were brilliant in defence.

In the second half, courageously playing with an injured foot, goal shooter Taylor Marshall found her range to shoot 7 goals, and with Lara sinking another 5 of her own, the result was never in doubt.

This year's result was sweet revenge for Adele who was part of the team that lost last year's GF by a single goal. Evangeline Jenkins who coached the girls this year was also part of that team, and she was still smiling from ear to ear the Monday after the game!

Also part of the team but unable to play in the GF was Emily Harris and Tayla Ronken, and we would like to thank Samantha Palfreyman, Chloe Gibbons, Elouise Phegan and Megan Hancock for filling in this year. It was also great to see so many staff, parents and friends attend the game to support the girls.

We'd also like to congratulate the Newstead Teal team and their coach Tiff Forrester for an outstanding year. They were the only team Black were unable to defeat (18-18 draw), but a couple of close losses earlier in the roster cost them a spot in the Grand Final and they finished 4th on the ladder.

NC Teal team members: Brianna Ross, Jessie Cunningham, Nicola Cunningham, Kate Dakin, Mckenzi Maher, Madie Campbell, Elly Lincoln, Jess Harrison, Tiff Whitney and Telisha Crack.

Newstead College has an incredibly strong tradition in netball, and in 2017 we are hoping to send a team to the Gold Coast netball carnival in July. See this link for more information.

<http://netball.world-sport.com.au>



# NEWSTEAD VISITS AMERICA



Newstead College Performing Arts students made it to New York and LA in a beautiful American Summer.

Highlights included; Empire State Building, Little Italy, Museum of Natural History (Night at the Museum) , Greenwich Village (Friends apartment building), Top of the Rock, NBC studio tour, visit to Jimmy Fallon studios, Juilliard School tour, Radio City Music Hall tour and Rockette show, Wicked, Matilda, Something Rotten, The Crucible. We travelled by bus, by taxi, by boat and yes, the subway!! – oh and we walked and walked (145km in two weeks). We had 6 hours of Acting classes, some saw Heidi Klum, we all saw Law and Order SVU being filmed in Central Park, walked past Harry M Miller and lots of tshirts for Donald Trump! Times Square was incredible by day and night. The people, the traffic, the NYPD, the food, the shops – it never stops. Then LA - Hollywood walk of fame, Chinese Theatre, Tours of Movie Stars homes, front of line passes to Universal, Harry Potter World! Two days at Disneyland, last day at Santa Monica and Venice Beach. Qantas 380 overnight home to winter!



## RETAIL WORK PLACEMENT

Certificate II students in Retail Services have completed many different work placements so far this year. They will have another opportunity in the middle of September. On work placement students are able to make connections with what they are learning in class to the retail industry. We are also continuing to run our Op Shop. It is open every Wednesday lunchtime in room 99.

Certificate II Hairdressing students recently attended a hairdressing seminar in Hobart for Matrix Colourinsider. They learnt about new conditioning colours and different colouring techniques. The Hairdressing team are now colouring hair, if you would like your regrowth coloured or a conditioning soft colour please contact Hairdressing on 63323243 or email [sharon.m.turner@education.tas.gov.au](mailto:sharon.m.turner@education.tas.gov.au)



# - CHINESE VISIT -



In early August, Newstead College hosted 21 students and 8 staff from our sister school, Jian'ou Number 1 School, Fujian Province, China.

Newstead College staff and students led an exciting range of educational programs to give our visitors a taste of education in a Tasmanian College.

The Programs included:

**Mathematics, Biology and Life Science in Tasmania** - *Adrian Baron*  
**Photography** Portrait on Tasmanian River Stones - *Scott Cunningham & Staff*  
**Physical Education** Introduction to AFL - *Tom Viney, staff & ADP Students*  
**Fun, Spoken English** - *Emma Maletta*  
**Café Cooking** - *Liz Self*

In addition, we were able to take our guests on a sight-seeing and food tour of Northern Tasmania, Platypus House at Beauty Point, Christmas Hills Raspberry Farm and The Cataract Gorge were Highlights.

Numerous other staff contributed time and effort to lead activities. Particular thanks to Sally and Leigh-Anne who hosted students in their homes and to Jayne for organising homestays and transporting students.

An outstanding team effort to showcase the best of Newstead College and Northern Tasmania. We look forward to future exchanges.



**RAC T INSURANCE  
TASMANIAN  
PORTRAITURE  
PRIZE**



Congratulations to Caleb Clifford who has been selected as a finalist in the RACT Portrait Prize 2016 for his photographic portrait of his brother, Isaac.

The **Tasmanian Portraiture Prize** presented by RACT Insurance is a prestigious award for Tasmanian artists, aged 30 and under. The prize, which started in 2008, is open to artists across many disciplines, with past award recipients working in mixed media, print, photography, painting, video and drawing.

Tasmania's premier portraiture award is the result of a highly successful partnership between RACT Insurance, Clemenger Tasmania and Tasmanian Regional Arts. The objective of the award is to foster the development of emerging Tasmanian artists and provide an opportunity for the public to appreciate their talents.



## CONTACT DETAILS

Newstead College, 30 Cypress St, Launceston TAS 7250

Phone: 03 6332 3232 Fax: 03 6332 3200

Email: [newstead.college@education.tas.gov.au](mailto:newstead.college@education.tas.gov.au)

Web: [www.education.tas.edu.au/newsteadcollege](http://www.education.tas.edu.au/newsteadcollege)